

Surname						Other Names					
Centre Number						Candidate Number					
Candidate Signature											

Leave blank
-------------

General Certificate of Education  
 June 2005  
 Advanced Subsidiary Examination



**GEOGRAPHY (SPECIFICATION A)**  
**Unit 3 Geographical Skills**

**GGA3**

Friday 27 May 2005 Afternoon Session

**In addition to this paper you will require:**  
 the resource booklet (enclosed).  
 You may use a calculator.

For Examiner's Use			
Number	Mark	Number	Mark
1			
2			
Total (Column 1)		→	
Total (Column 2)		→	
TOTAL			
Examiner's Initials			

Time allowed: 1 hour

**Instructions**

- Use blue or black ink or ball-point pen. You may use pencil for maps, diagrams and graphs.
- Fill in the boxes at the top of this page.
- Answer **one** question, **either** Question 1 in Section A, **or** Question 2 in Section B.
- Do all rough work in this book. Cross through any work you do not want marked.

**Information**

- The maximum mark for this paper is 50.
- Mark allocations are shown in brackets.
- You are expected to use a calculator where appropriate.
- You will be assessed on your ability to use an appropriate form and style of writing, to organise relevant information clearly and coherently, and to use specialist vocabulary, where appropriate.
- The degree of legibility of your handwriting and the level of accuracy of your spelling, punctuation and grammar will also be taken into account.

**Advice**

- Where appropriate, credit will be given for the use of diagrams and where reference is made to your personal investigative work.

Answer **one** question, **either** Question 1 in Section A, **or** Question 2 in Section B.

### SECTION A

Answer **all** parts of the question in the spaces provided.

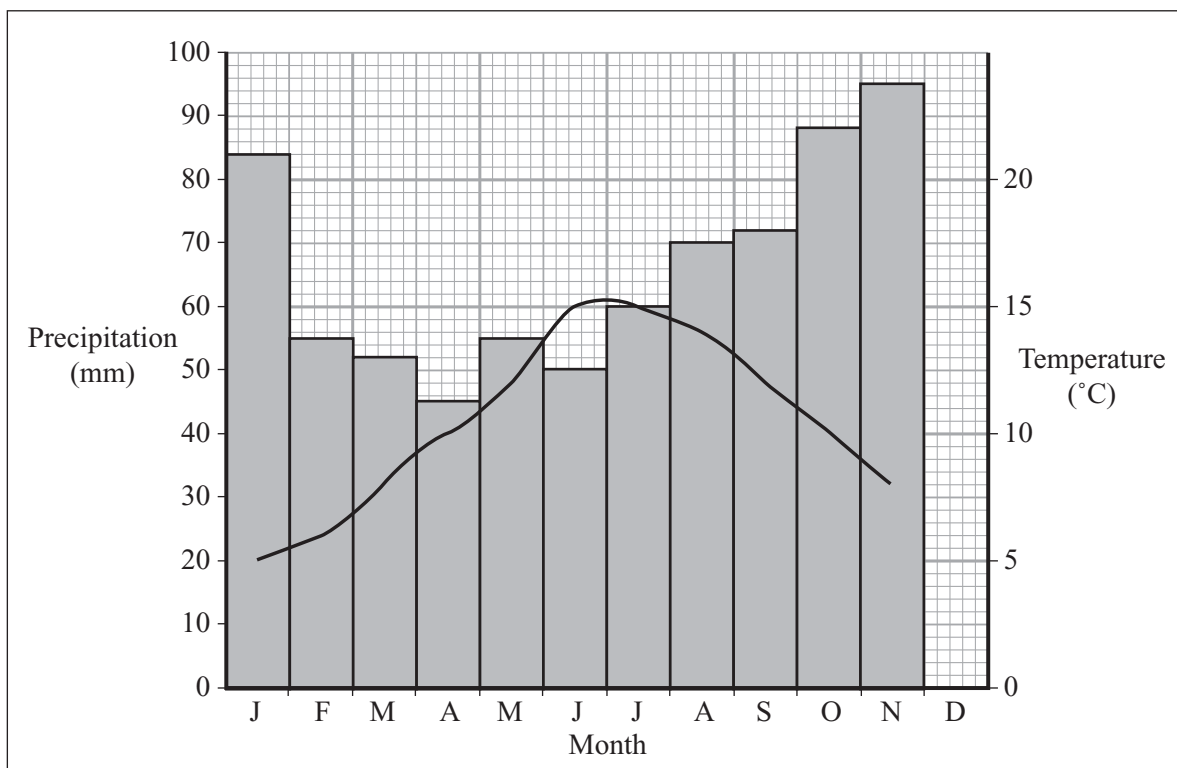
#### The Physical Environment

**Title: Rivers – Natural systems and the impact of human interference.**

- 1 (a) Study **Figure 1a** which shows Southampton's climate and **Figure 1b** which shows the discharge of the nearby River Stour for 1997.

- (i) Complete **Figures 1a** and **1b** by adding the following information.

Month	Precipitation (mm)	Average temperature (° C)	Discharge (cumecs)
December	84	6	25



**Figure 1a**

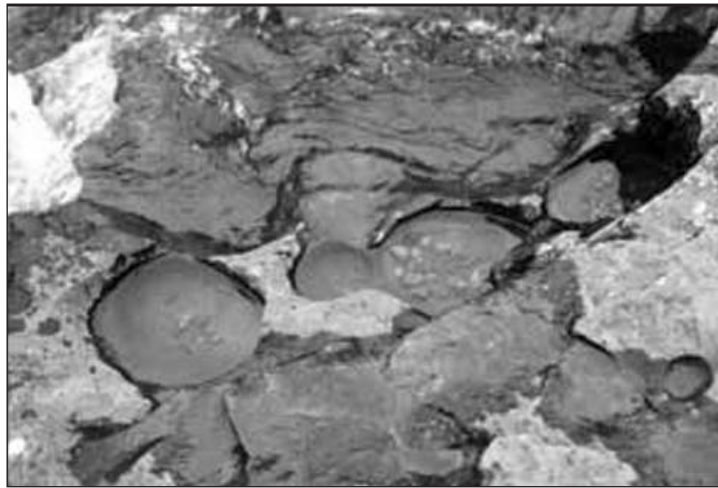




- (c) **Figure 3** (*resource booklet*) is a photograph of potholes, a common feature of river channels in their upper course.

**Figure 4** is a black and white photocopy of **Figure 3**.

Label **Figure 4** to show the characteristics of the landform and how it developed.



**Figure 4**

(6 marks)

**QUESTION 1 CONTINUES ON THE NEXT PAGE**

**Turn over ►**







**NO QUESTIONS APPEAR ON THIS PAGE**

**TURN OVER FOR THE NEXT QUESTION**

**Turn over ►**

Do **not** answer this section if you have answered Question 1 in Section A.

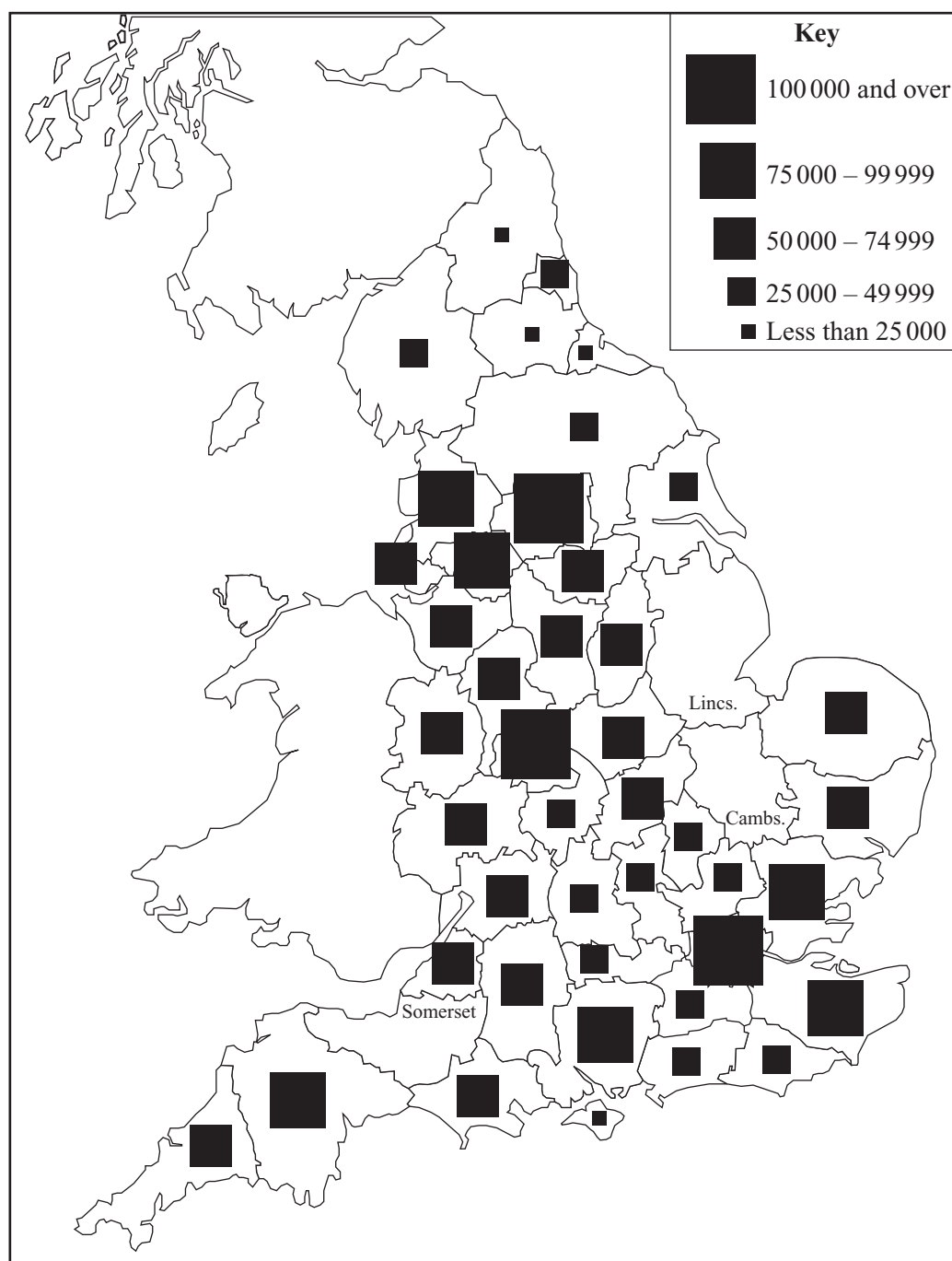
## SECTION B

Answer **all** parts of the question in the spaces provided.

### The Human Environment

#### Title: Suburbanisation

- 2 (a) **Figure 7** shows the number of new houses needed in England by 2016.



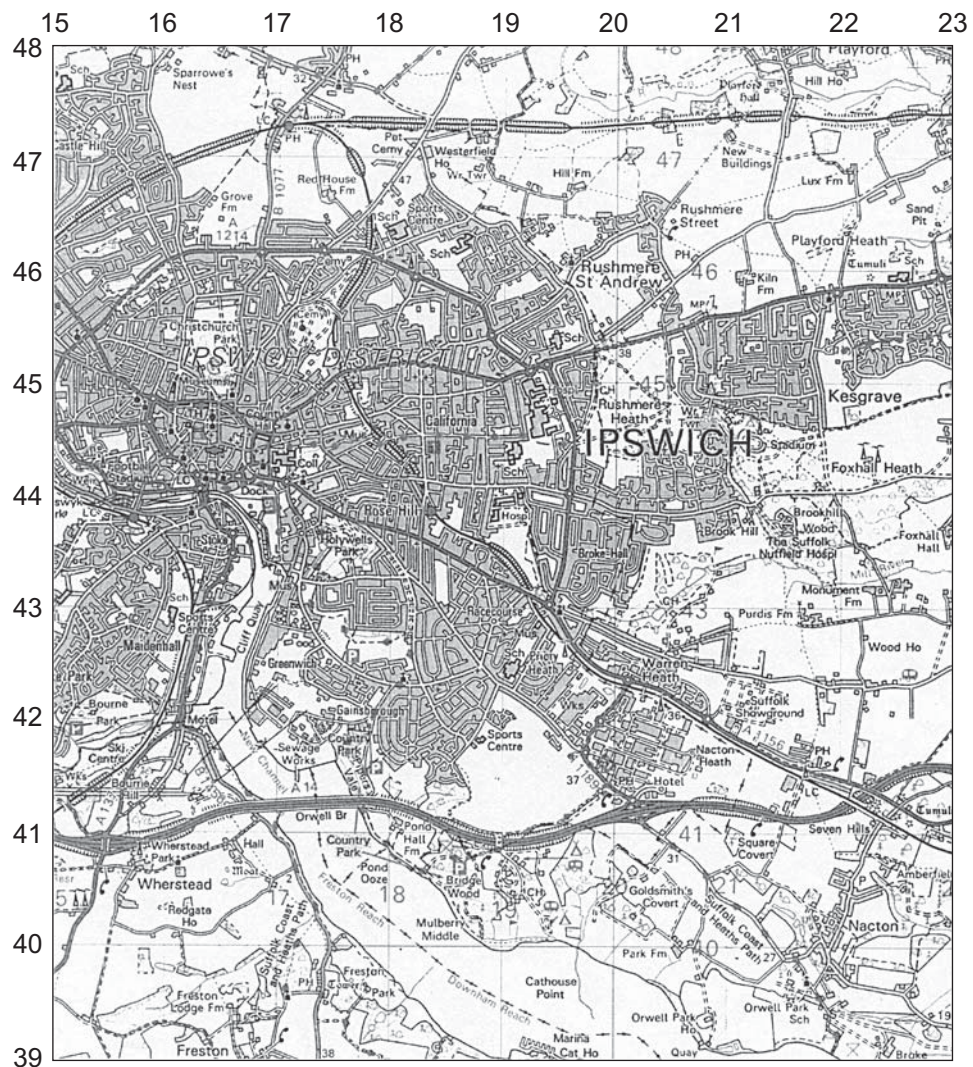
**Figure 7**



- (b) Study **Figures 8a** and **8b** (*resource booklet*), the Ordnance Survey map extracts of Ipswich in 1988 and 2004.

**Figure 9** is a photocopy of **Figure 8b**.

- (i) Label **Figure 9** to show the variety of changes which have taken place in the rural–urban fringe.



**Figure 9**

(6 marks)







