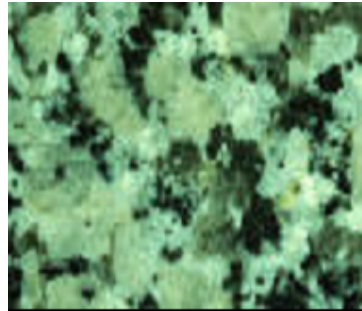


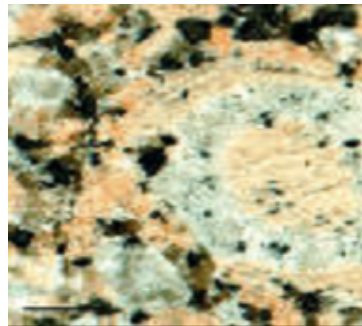
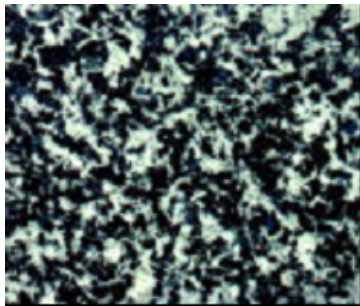
Rock images



Igneous rocks

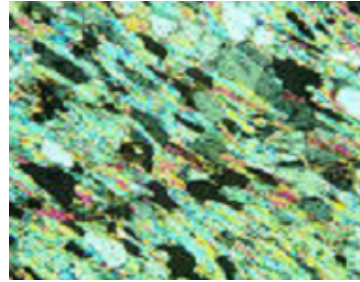


Crystals
randomly
oriented



Cooling rate gives different
size crystals

crystals in layers or bands

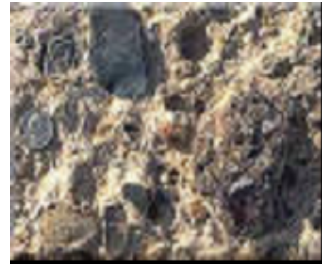


Metamorphic
rocks

Sedimentary rocks



Soft crumbly layers of
rounded grains



fossils

igneous

basalt

formed by lava

granite

sedimentary

sandstone

limestone

formed by

weathering

may contain fossils

crumbly

metamorphic

formed by heat

and pressure

crystals in 'bands'

gneiss

marble

mudstone

slate

clay

mudstone

rounded particles

crystals

schist

shale