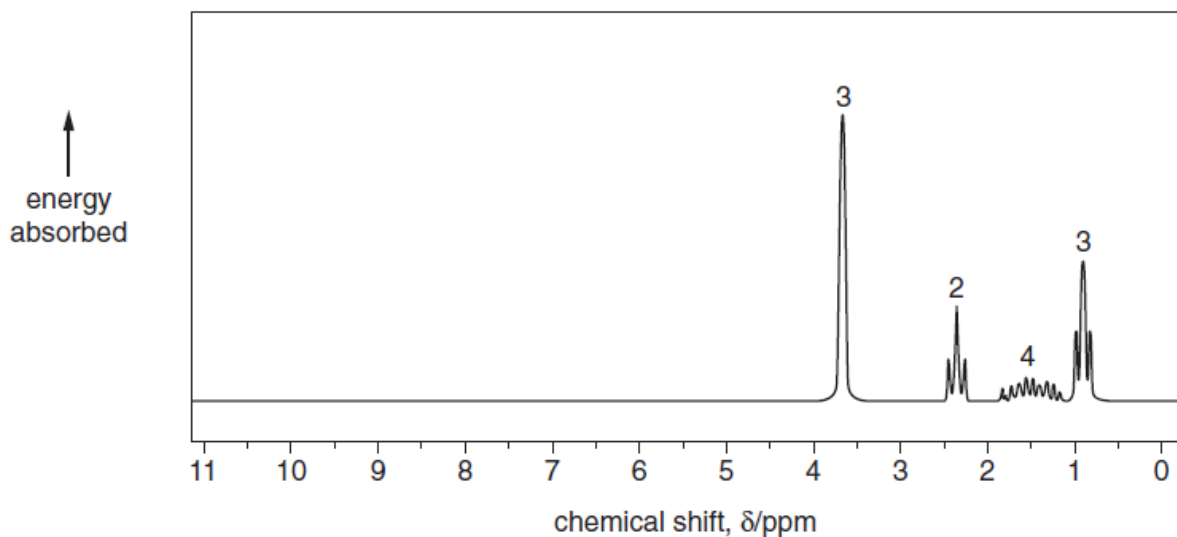
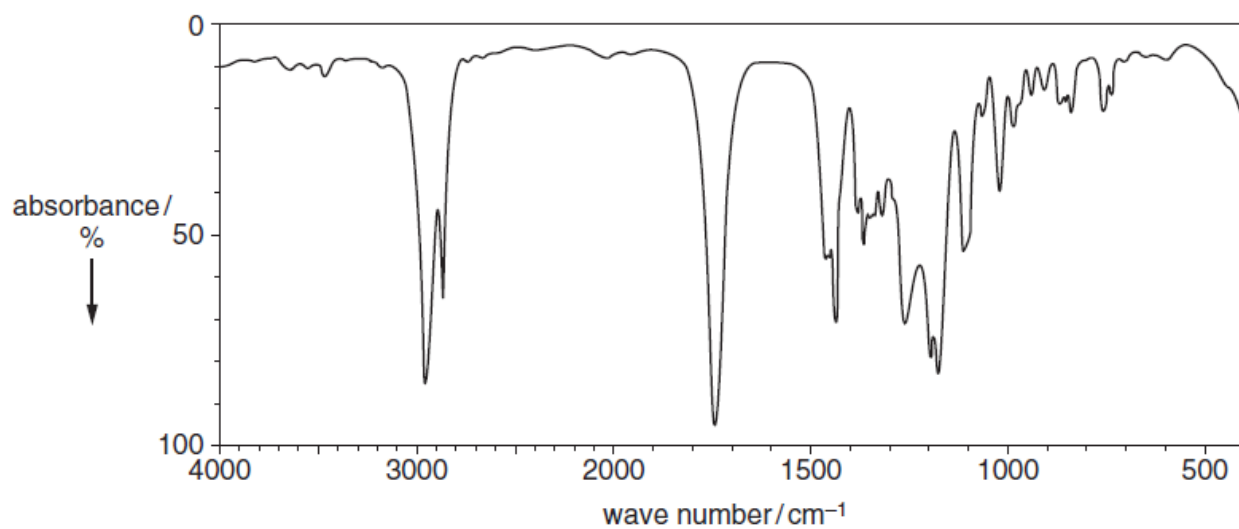
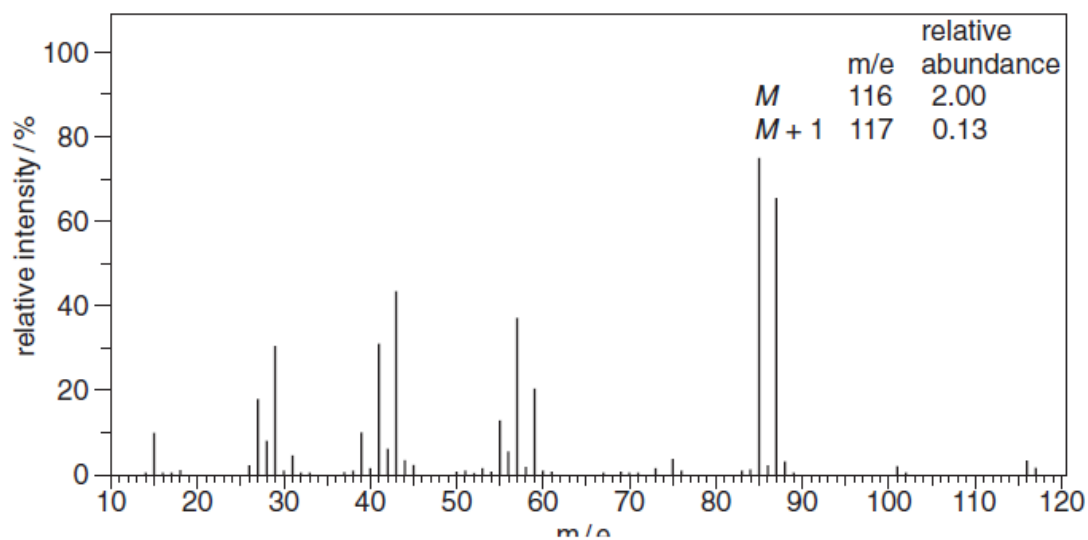


Combined Analysis

- 4 In this question, you will need to use data from the spectra given below to identify the compound **D** that produced them.



F324 Module 3: HW10

- (a) Compound **D** has the formula $C_xH_yO_2$, and is saturated.
Use the mass spectrum to deduce the values of x and y , showing how you arrive at your answer.

[3]

- (b) In this question, one mark is available for the quality of use and organisation of scientific terms.

Use as much data as possible from each of the spectra to identify structural features present in **D**, and hence suggest a structural formula for the compound.

.....

.....

.....

.....

.....

.....

.....

.....

.....

.....

.....

.....

.....

.....

.....

.....

.....

.....

.....

.....

.....

.....

structural formula of **D**

[9]

Quality of Written Communication [1]

[Total: 13]